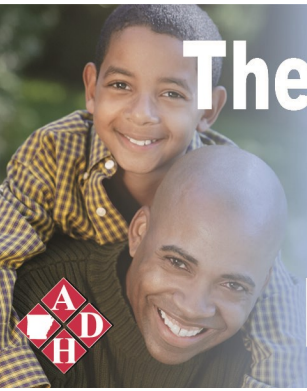


The Arkansas Department of Health Nevada County

Because Your Health Matters



Making Your County Healthier

The Arkansas Department of Health (ADH) is a centralized public health system with four main Centers and the Public Health Laboratory that work with 94 local health units to provide clinical preventive services, administer public health programs, and issue licenses and certificates. Everything at ADH is done because we believe that communities can be healthier and safer, and people can live longer.

Clinical Preventive Health Services

- Immunizations
- Women's health services
- Women, Infants and Children (WIC) nutrition program
- Testing and support for tuberculosis and sexually transmitted diseases, including HIV

Public Health Programs

- Infectious disease investigations
- Statewide trauma system
- Local emergency preparedness planning
- Tobacco prevention and cessation programs
- Statewide prescription drug monitoring program
- Hometown Health Improvement
- Chronic disease prevention and management

Licensing and Certification

- Vital records (birth, death, marriage)
- Restaurant inspections
- Tests for drinking water
- Hospital and Emergency Medical Services (EMS) Licensing

Services Information

Budget and Employees, Fiscal Year 2018^a

Health Department Budgeted Annual Salary/Fringe	\$575,836
Health Department Employees	9

Environmental Services, Fiscal Year 2017

Food Establishment Inspections	82
Onsite Wastewater System Inspections	6
Swimming Pool Inspections	2

Local Health Unit Visits, Fiscal Year 2017

BreastCare	9
Family Planning	492
General Medical	73
HIV/STD	329
Immunizations	570
Maternity	19
Tuberculosis	157
Women, Infants, and Children (WIC)	424

Women, Infants, and Children (WIC), Fiscal Year 2017

Number of Vendors	1 ^b
Payments to WIC Vendors	-
WIC Clients Served Annually	479

^aIncludes County employees only. ^bPayment amount cannot be displayed due to confidentiality requirements.



ARKANSAS
DEPARTMENT OF HEALTH

Nevada County

Demographics	Description	Number	Percent	Rank	State %
Total Population	The number of people who live in the county.	8,668	N/A	66	0.3%
White (Non-Hispanic)		5,521	63.7%	57	73.4%
Black (Non-Hispanic)		2,945	34.0%	15	15.4%
Hispanic or Latino Origin		26	0.3%	75	7.0%

U.S. Census Bureau, 2012-2016 Population Estimates: Ranks are based on the percent of the total population. Ranks are 1= highest and 75 = lowest.

Economic Indicators	Description	Number	Percent	Rank	State %
Median Household Income	The income at which half the households earn more and half the households earn less.	\$30,750	N/A	68	\$42,336
People of All Ages in Poverty	People of all ages living below the Federal Poverty Line (FPL).	2,670	30.8%	72	18.8%
Children in Poverty	Children under age 18 living below the Federal Poverty Line (FPL).	933	47.9%	73	26.8%
Children in Single Parent Homes	Children that live in a household headed by single parent.	557	28.6%	17	35.4%
Uninsured	Population under age 65 without health insurance.	1,216	17.7%	60	14.5%
No transportation	Households with no transportation.	296	8.4%	57	6.4%

Injury*	Description	Number	Rate	Rank	State Rate
Injury Related Hospital Discharges	All injury related hospital discharges.	152	310.1	10	512.6
Unintentional Fall Discharges	Hospital discharges from falls due to loss of balance and not due to paralysis or injury.	60	101.7	8	222.8
Motor Vehicle Accident Discharges	Hospital discharges from motor vehicle accidents including cars, motorcycles and ATVs.	18	43.9	19	69.5
Traumatic Brain Injury Discharges	Hospital discharges due to injury resulting from external mechanical forces.	8	15.6	29	20.9
Deaths from Injury	Deaths from intentional and unintentional (accidental) injuries, 5-year average.	11	122.2	74	78.5

*When low numbers result in unstable injury or death rates, rates are not displayed. Rank was calculated for those counties where rates were available. Rates are per 100,000 population. Injury related discharges are 5-year averages. 5-year average indicates the average number of annual deaths for the most recent 5 years of available data.

Health Indicators†	Description	Number	Percent	Rank	State %
Current adult smokers	Adults (18+) reporting being current smokers.	1,597	24.0%	71	24.9%
Current youth smokers	Students grades 6-12 reporting being current smokers.	49	6.4%	34	5.6%
Low Birth-Weight Babies	Live births where the infant weighed less than 2,500 grams (5 lbs., 8 oz.), 5-year average.	10	9.9%	57	8.8%
Life Expectancy	The average expected life time (in years) from birth.	74.2 yrs.	N/A	52	76.0 yrs.
Natural Teeth	Adults 65+ who have had all their natural teeth extracted.	1,363	20.9%	37	23.0%
Water Systems with Fluoridation	Public water systems containing enough fluoride to protect teeth.	2	40.0%	46	49.7%

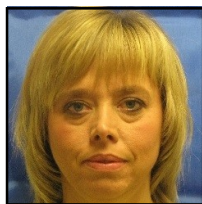
	Description	Number	Rate	Rank	State Rate
Infant Mortality, 2012-2016	Measures the number of deaths among children less than one year of age .	4	7.6	47	7.1
Teen births	Births to mothers aged 15 to 19 years, 5-year average.	13	53.2	59	39.5

†5-year average is shown for low birth-weight babies and teen births and indicates the number of births on average each year for the most recent 5 years of available data; Infant mortality number is the total number of deaths over the most recent 5 years available and infant mortality rate is an estimate of the number of infant deaths for every 1,000 live births; Teen birth rates are per 1,000 female population ages 15-19 years.

Major Health Risk Factors	Description	Number	Percent	Rank	State Rate
Food Insecurity	The population who did not have access to a reliable source of food during the past year.	1,950	22.2%	60	18.4%
Physical Inactivity	Adults (Age 18+) reporting no leisure-time physical activity .	2,296	35.2%	40	32.5%
Obesity (adults)	Adults (Age 18+) reporting being obese (BMI >= 30.0)	2,185	33.5%	21	35.7%
Overweight (adults)	Adults (Age 18+) reporting being overweight (BMI >=25.0 - 29.9).	2,549	39.1%	65	32.5%
Obesity (youth)	Students grades K-10 with a BMI >= 95th percentile for age and sex.	299	20.7%	12	22.0%
Overweight (youth)	Students grades K-10 with a BMI >=85th percentile to <95th percentile for age and sex.	291	20.1%	72	17.0%
Low Health literacy	Adults with basic or below basic health literacy skills.	2,943	43.4%	61	37.1%
Substance Abuse (youth)	Students grades 6-12 reporting using drugs in the past 30 days.	55	7.3%	14	9.9%

For more information contact:

1501 W. First N.
Prescott, AR 71857
Phone: 870-887-2004
Fax: 870-887-6407
Hours: 8:00 a.m. - 4:30 p.m.
Mon. - Fri.



Debbie Henderson
LHU Administrator

COUNTY JUDGE

Mark Glass
215 E. 2nd St.
Prescott, AR 71857
Phone: 870-887-3115
Fax: 870-887-5795



COUNTY HEALTH OFFICER

Michael C. Young, M.D.

